

THE DOCUMENT COMPANY
FUJI XEROX

DocuCentre - II

3005 / 2055 / 2005



Consolidate the pieces of your
office document workflow puzzle

A **device** purpose built to suit all your office **requirements**

Introducing DocuCentre-II 3005/2055/2005, the one stop MFD for all your multifunction requirements.

Available in a range of configurations and with a number of optional accessories this device can be tailored to meet your exact requirements. Representing the complete office “manager”, it is capable of meeting the office document production & workflow requirements of small to large workgroups.

DocuCentre - II 3005/2055/2005

Functional Configurations...

Available as a stand alone copier as standard, the DocuCentre-II 3005/2055/2005 can also be configured to include printing, scanning and/or faxing. So, if your requirements today are only for a high quality copier, you can rest assured that additional functionality can be added down the track as your business requirements expand and change.



Copy



Print



Scan



Fax



Email



Paper Tray Flexibility

DocuCentre-II 3005/2055/2005 is available with two fully adjustable paper trays as standard and two additional paper tray options or a stand to meet your document production requirements. You can purchase this device with:

- Two Trays + Stand
- Two Trays + Two Tray Module
- Two Trays + Tandem Tray Module

Finishing

Want the ability to improve productivity by producing stapled output on the fly? With the DocuCentre-II 3005/2055/2005, this is easier than ever. This device is available with a robust B-Finisher that makes the manual collation and stapling of documents a thing of the past. It is also capable of stacking up to 1,000 sheets to optimise your productivity.

Configuration Options:



Why Choose a Multifunction Device?

Look around your office, are you currently using separate devices to print, copy, scan and fax? If so, have you ever considered how much they're costing you or how much you could save with a consolidated multifunction solution?

Utilising multiple single function devices can be filled with expenses you may not have considered. Expenses can include the cost of toner, servicing, spare parts, multiple network connections and the cost of the valuable office space.

Consolidating your copy, print, scan and fax devices **into one robust Fuji Xerox multifunction unit** will bring you a number of benefits:

All inclusive cost per page

This charge covers your toner consumption, service call outs and spare parts.

Save valuable floor space

By consolidating all your devices into one compact unit you can substantially reduce the amount of office floor space they consume.

If One function fails, They DON'T all fail

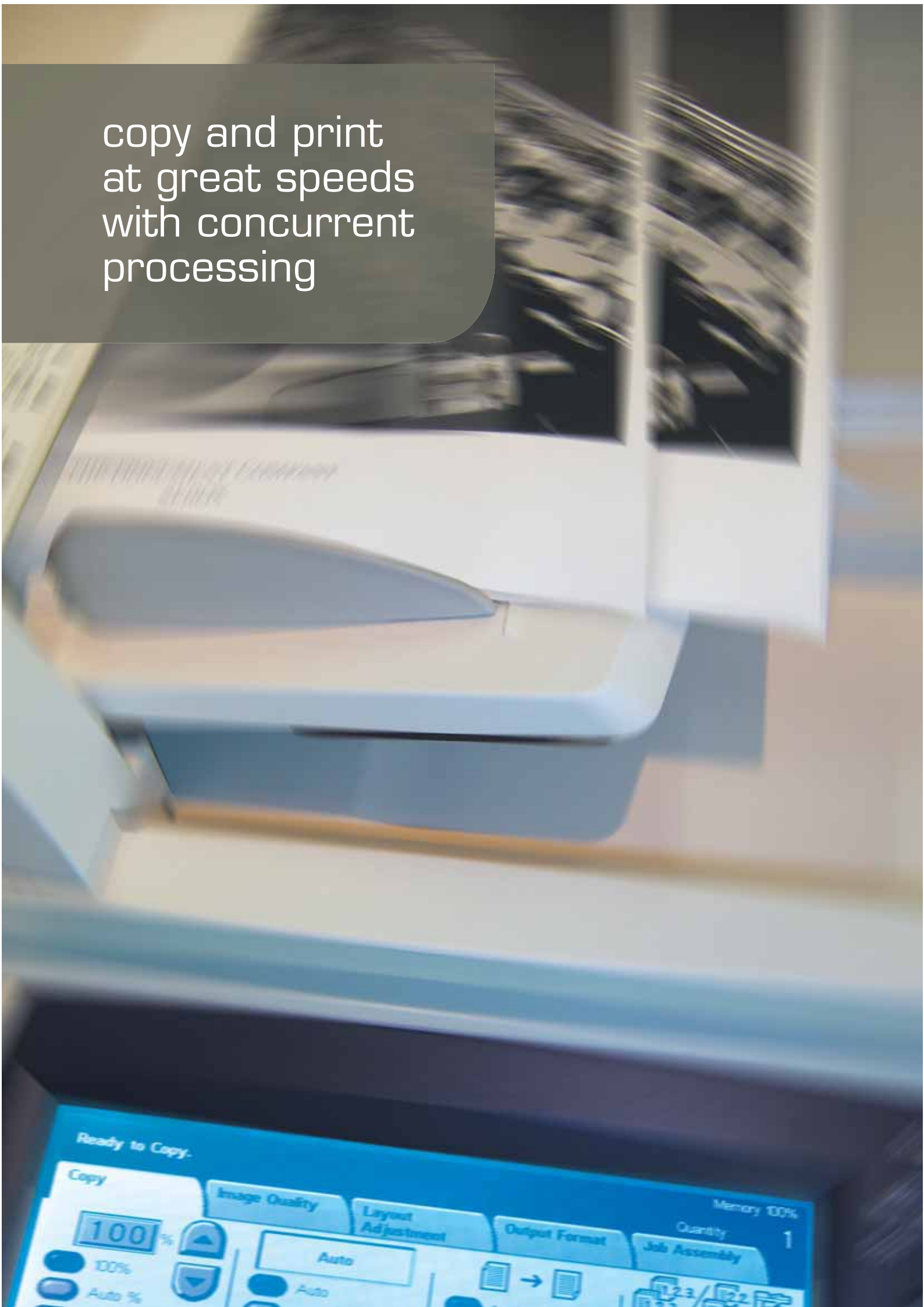
A common misconception with multifunction devices is that if one function fails, the entire machine is inoperable. With Fuji Xerox devices this is not the case. Whilst functions can operate concurrently, they are not all co-dependant and may not influence one another.

One Supplier for All your Document Requirements

Whether you're ordering consumables, requesting information or logging a service call, you'll always be dealing with one reputable supplier... Fuji Xerox New Zealand.



copy and print
at great speeds
with concurrent
processing



copy



The DocuCentre-II 3005/2055/2005 produces output at a speedy 33/28/23 ipm. Its rich feature set and ability to process multiple jobs concurrently make it a valuable and productive device for your users.

Covers and Separators *

Pre-printed covers and/or separators can be automatically inserted into pre-defined sections of your copy job removing the need for manual intervention and collation at a later stage.



Poster Creation

DocuCentre-II 3005/2055/2005 is also capable of creating poster sized copies or prints of a document by copying an enlarged image onto multiple sheets of paper that are then assembled to create the original document as a large poster.

Additional Copy Features **

- Job Build
- Poster Creation
- Multiple-Up Copying
- User Defined Annotations
- Automatic media identification & paper tray switching

Customisable User Interface

With a customisable User Interface not only can you standardise the look and feel of this and many other Fuji Xerox devices, but you also have the power to control what features you make available to your users.

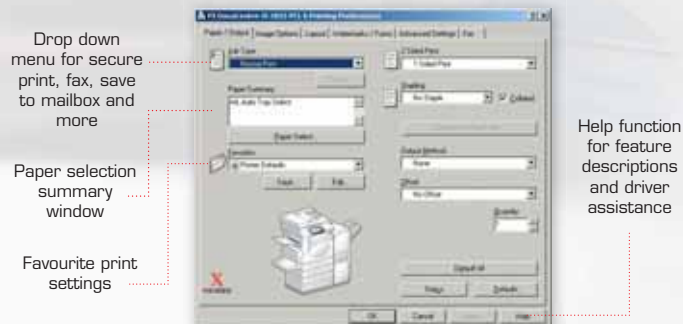
print



The DocuCentre-II 3005/2055/2005 produces quality output at True 1,200 x 1,200 dpi and is equipped with features to meet all your print requirements.

Print Drivers

The PCL6 print driver is standard with this device. Boasting the similar easy to use interface as you'll find on our other office multifunction devices, it will help substantially simplify your print production process.



An Adobe PostScript 3 print driver is also available as an option if required

Delayed Print

Manage your time and device usage more effectively by scheduling large print jobs to run outside your regular business hours.

Favourite Print Settings

Save time by storing the settings of frequently printed documents in the favourites menu of your print driver.

Additional Print Features

- Secure Print
- Sample Print
- Multiple-up Printing
- Watermark Insertion

Convenient access to copying, scanning, faxing and email

Fully customisable User Interface layout

Customisable hard button short cut keys



DocuCentre-II 3005

scan

Digitising and distributing hard copy documents is easy using the DocuCentre-II 3005/2055/2005's scanning technology. With a few simple keystrokes at the user interface panel, documents can be scanned and shared with others via email, SMB/FTP transfer or mailboxes at the device.

Password Protect PDF

Hardcopy documents scanned as PDF files can be password protected at the user interface with restrictions imposed for opening, editing, selecting or printing the document.

Job Flow Sheets

This feature allows you to route scanned documents to multiple destinations, see diagram below:



Additional Scan Features

- Browse network folders for appropriate scan destinations at the user interface
- Search recipient email addresses by entering their name at the user interface
- Lock down the scan to email "From" field
- Convenient mailbox scanning and retrieval as a PDF to reduce mail server traffic

Device Management

Control the costs associated with your DocuCentre-II 3005/2055/2005 and administer the device from your network connected PC using the following FREE management tools:

Internal Auditron/Xerox Standard Accounting - set limits on the quantity of print, copy, scan and fax jobs individual users can produce and track the usage through a printed report or CSV file respectively.

CentreWare Internet Services - configure device settings, monitor usage and consumable status, upload address books, enable Auditron and much much more.

CentreWare Web - install, configure, report and troubleshoot all SNMP devices on your network regardless of manufacturer.

fax

Whilst traditional walk up faxing is available on the DocuCentre-II 3005/2055/2005, this device also incorporates a number of additional fax features designed to save you time and money.

Server Fax Integration

The Server Fax option available with the DocuCentre-II 3005/2055/2005 allows it to integrate with your organisation's existing server fax solution.

PC Fax **

Use this feature to manage your time more effectively. Send faxes directly from the PCL6 PostScript print driver on your PC and avoid having to print your documents prior to faxing.

Electronic Fax **

Concerned about faxes getting lost in amongst piles of other documents? This feature provides peace of mind by routing incoming faxes to a nominated email address, mailbox or network connected PC.

Fax Re-Send

This handy feature will capture and store undelivered faxes sent directly from the device. As a result, you can now edit the fax number at the user interface and resend if required, without having to rescan the document(s).

Device Security

In this day and age, the security of confidential documents is paramount. The DocuCentre-II 3005/2055/2005 provides you with a number of security options designed to enhance your peace of mind.

Secure Print - enhances the security of confidential documents sent to print by releasing them only when the user enters a predefined password at the device.

Data Security Kit - a protection kit that provides the option of overwriting, encrypting or completely clearing the data resident on your device's hard disk drive.

SSL/sMIME - for secure communication with your device on your network or over the Internet.

scan and share documents via fax and email from the user interface touch panel



Specifications

DocuCentre-II 3005/2055/2005

THE DOCUMENT COMPANY

FUJI XEROX

Output Speed - Printing and Copying

DocuCentre-II	3005	2055	2005
A4 Monochrome	33 ipm	28 ipm	23 ipm
A3 Monochrome	17 ipm	15 ipm	13 ipm

Network Printing

Processor	Power PC-300MHz
Memory	384 (std) / 512 MB (max)
Hard Disk	40GB (std)
Network Interface	Standard: Ethernet 100Base-TX / 10Base-T, USB 2.0
Printer Languages	Standard: PCL6, PCL5e Optional: Adobe PostScript 3
Resolution	True 1,200 x 1,200 dpi
Operating Systems	Windows® 95 / 98 / Me, Windows® NT 4.0 Windows® 2000 / XP, Windows® Server 2003, Windows Vista *** & Mac OS
Protocols	TCP / IP, IPX / SPX, SMB, IPP, NetWare, NetBEUI, EtherTalk (AppleTalk), Port9100 (Netware supported by PS Kit ROM)

Copying

FCOT	4.3 seconds or less
Concurrency	Yes
Resolution	600 x 600
Reduction / Enlargement	25% to 400%
Maximum Set Quantity	999 sheets
Internal Copy Auditor	Standard
Foreign Device Interface (optional)	Interface to 3rd party access control devices

Network Scanning

Concurrency	Yes
Input Speed	50ipm
Resolution	600dpi, 400dpi, 300dpi, 200dpi
Maximum Scan Area	A3
Network Protocol (Network Scanning)	TCP / IP (SMB, FTP, SMTP, Salutation)
File Formats	TIFF, PDF and DocuWorks
Document Management Fields	6
Scan Capabilities	Email, Mailbox, PC / Server (using FTP / SMB protocol), Job Flow Sheets, Network Scanning Templates

Facsimile Specifications

Transmission Time	Less than 3 seconds per page
Multiple Lines (optional)	Up to 2 additional lines (maximum 3 lines)
Speed Dials / Group Dials	500 / 20
Sending Document Size	A4, B4, A3

Supported Server Fax Products****

Accurate Law Office (ARLO)
Freeflow OfficeFaxPro certificate
GeniFax Ver 3.3.1 and onwards
RightFax9.0 EDC
StreamCentre Version 6.35 and onwards

Paper Handling - DADF

Capacity	75 sheets
Paper Sizes	A5 to A3
Paper Weights	38 to 128 gsm

Paper Handling - Trays 1 & 2

Capacity	Tray 1: 500 sheets Tray 2: 500 sheets
Paper Sizes	A5 to A3
Paper Weights	Tray 1: 60 to 105 gsm Tray 2: 60 to 216 gsm

Paper Handling - Trays 3 & 4 (Two Tray Module)

Capacity	Tray 3: 500 sheets Tray 4: 500 sheets
Paper Sizes	A5 to A3
Paper Weights	60 to 216 gsm

Paper Handling - Trays 3 and 4 (Tandem Tray Module)

Capacity	Tray 3: 800 sheets Tray 4: 1,200 sheets
Paper Sizes	A4
Paper Weights	60 to 216 gsm

Paper Handling - Bypass Tray

Capacity	95 sheets
Paper Sizes	A5 to A3
Paper Weights	60 to 216 gsm

Finisher B - Stacker / Stapler (Optional)

Paper Sizes	B5 to A3 (64 to 105 gsm)
Stacker Capacity	Non-stapled: 1,000 sheets Stapled: 50 sheet sets
Stapler Capacity	50 sheets (64 to 90 gsm)
Staple Positions	Front corner (single), rear straight (single), dual
Staple Cartridge	5,000 staples

General

Electrical Requirements	220/240V, 50/60Hz, 10A
Power Consumption	Power Saver Mode - 6.33 watts Standby Mode - 126.7 watts Running Mode - 582 watts
Warm up	24 seconds or less
Dimensions	640mm x 650mm x 1,112mm (WxDxH - excluding finisher)
Weight	From 99kg (excluding finisher)

* Cover and separator weight and media types must adhere to the "Paper Tray Capacity" specifications outlined in the Customer Expectation Document

** May require additional optional accessories depending on device configuration

*** Support for Windows Vista will be available by June 2007

**** Server fax products may require additional compatible modules

For detailed product specifications, optimum performance parameters & service clearances, refer to the DocuCentre-II 3005/2055/2005 Customer Expectation Document



www.fujixerox.co.nz

New Zealand: Fuji Xerox New Zealand Ltd, 17 Hargreaves Street, College Hill, Auckland



©2005 Fuji Xerox, Xerox, The Document Company, the stylised X, Document Centre are registered trademarks/trademarks of Fuji Xerox or its associated companies. Other trademarks are the property of their respected owners. Whilst the information is correct at the time of printing, Fuji Xerox New Zealand Pty Ltd reserves the right to change the specifications or withdraw supply of the equipment/software described herein without notice.