

DocuCentre

C3300

C2200

C2201

FUJI xerox 

DocuCentre-III C3300 / C2200 / C2201 Digital Color Multifunction Device

Powerful performance that will benefit
your business and the environment

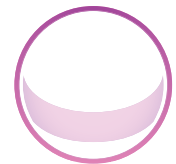


Creating an integrated office system to future-proof your business

The range of DocuCentre-III C3300/C2200/C2201 multifunction devices

are equipped with many advanced features to power your business with a focus on environmental performance. They are the first digital colour multifunction devices in the industry to receive the prestigious Minister of Economy, Trade and Industry prize in the Eco-Products Category at the 4th Eco-Products Awards in Japan for use of industry-first environmental technologies: new LED print head technology; lead-free shafts; and biomass plastic.

If you're used to black and white only, consider the benefits of adding a splash of colour to your office documents and marketing materials. Colour captures attention, enhances productivity, improves communication and could help boost sales. With many businesses competing for a share of the market, companies can greatly enhance their business image by using colour in business documents.



Features at a glance

- Print, copy, with optional scanning and faxing
- Fast printing and copying at up to 35 ipm
- Intuitive, easy-to-use colour user interface
- Most energy efficient device in its range
- Equipped with powerful security measures



Configuration and finishing options

Compact design

The design of the engine and paper output areas achieves a more compact and lightweight main unit. The Finisher-A1 (stapler) is fitted within the main unit providing a more space efficient design than conventional models.

Breakthrough in LED print head technology for high-resolution, high-quality images

The newly developed LED print head technology achieves an output resolution of 1,200 x 2,400 dpi for superb image quality. The LED print head is compact, comprises less moving parts, emits less noise and achieves lower power consumption.

Customisable user interface

The customisable user interface available with the DocuCentre-III C3300/C2200/C2201 devices allows for standardising the look and feel across all other applicable Fuji Xerox devices in the office.

Universal design allowing for easy operation

The design of the DocuCentre-III C3300/C2200/C2201 is based on universal design principles. The functionality is easily understood so to enable a single user to operate the machine from 'start to finish'. The design incorporates lightweight, easy-to-use drawers, as well as easy-to-see paper output areas.

Finishing options

The DocuCentre-III C3300/C2200/C2201 can be configured to include any one of the following finishing options:

- Finisher-A1 - Internal Stapler
- Finisher-B1 - Stacker/Stapler/Hole Puncher/ Bi-Folder/ Booklet Maker (Folding line)¹
- Finisher-C1 - Stacker/Stapler/Hole Puncher
- Booklet Finisher-C1 - Stacker/Stapler/Hole Puncher/ Bi-Folder/Booklet Maker

¹ Hole Puncher and Booklet Maker (Optional)



1 Device
Standard Four Tray
Configuration

2 Finisher-A1
Internal Stapler

3 Finisher-B1
Stacker/Stapler/Hole
Puncher/ Bi-Folder/
Booklet Maker
(Creasing)

4 Finisher-C1
Stacker/Stapler/Hole
Puncher

5 Booklet Finisher-C1
Stacker/Stapler/Hole
Puncher/Bi-Folder/
Booklet Maker



1 One touch buttons for fax and internet fax

2 Fully customisable colour touch screen layout

3 Convenient access to advanced functions such as copying, network scanning, faxing and email

4 Assign frequently-used features to the custom hard buttons

5 Users log-in to access the device and the usage of colour printing can also be managed.

Copy

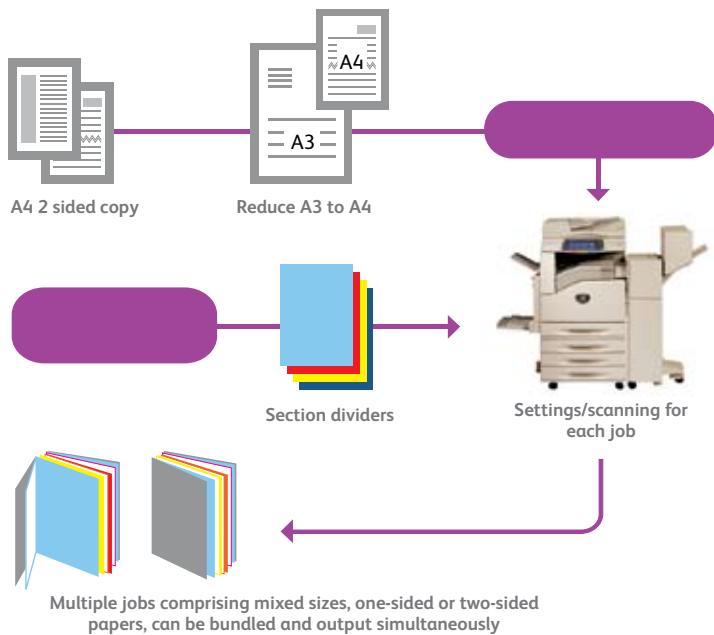
Automatic colour sensing technology

Using built-in image sensing technology, the DocuCentre-III C3300/C2200/C2201 automatically recognises when colour is used and will apply the relevant charge.



Job build

Merging and manipulating hardcopy documents is easy with this feature. It allows users to divide a copy job into numerous segments, apply unique settings to each, collate and print all segments; thus eliminating the need for manual copying and collation (see diagram below).



User defined annotations

Add information such as stamp, date and page number. Custom annotations containing up to 32 characters can be made while the size, position and colour of annotations can be changed at any time.

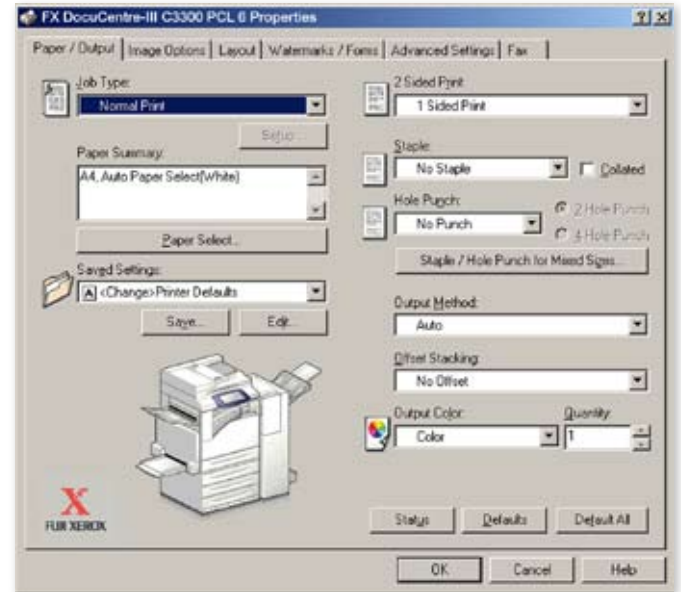
Additional copy features

- Multiple-up and booklet creation
- Media identification & auto tray switching
- Poster creation
- Covers insertion

Print

WHQL certified print drivers

WHQL certified PCL6 (Standard) and Postscript (Optional) print drivers are available with these devices. With an easy-to-use interface, similar to those found on other Fuji Xerox office multifunction devices, your print production process will be substantially simplified.



Scan¹

Fax

Create searchable PDF's on the fly (Optional)

Scanned documents can be transformed into searchable PDF's in one easy step from the device user interface, eliminating the need for expensive desktop OCR (optical character recognition) packages that are usually licensed to a single workstation. Documents can be delivered directly to a desktop, network folder or an email address. This feature allows for maximising productivity through an efficient workflow process.

Password protect PDF documents

Hardcopy documents scanned as PDF's can be password protected with restrictions imposed for opening, editing, selecting or printing the document.

Thumbnail display (Optional)

The retrieval of documents stored at the device is now easier than ever. Every page of the document is saved in multiple mailboxes can be viewed as thumbnails at the user interface of the device (see image below).

Additional scan features

- Restrict access to addresses not listed in the local address book
- Browse network folders

Fax restriction

You can restrict users from sending faxes to numbers not listed in your predefined address book. This security feature will help protect the leakage of confidential information and reduce costs by preventing users from using the fax function for non-business related purposes.

Electronic fax (with optional Internet Fax kit)

If there is a concern about faxes getting lost in piles of other documents, this feature eliminates paper wastage and provides peace of mind. It will route incoming faxes to a nominated email address as a TIFF file, or further distribution as required.



Fax re-send

This handy feature will capture and store undelivered faxes sent directly from the device. This means that a fax number can now be edited at the user interface and resend if required, without rescanning the document(s).

Additional fax features

- Supporting a fax header for sending Internet faxes, including information such as date and time and transmitter's name
- Additional screen to confirm the recipients fax number to prevent incorrect fax transmission

¹Scan and Fax are optional
Some Scan and Fax features will require optional accessories

Device management

CentreWare Internet Services

This feature allows administrators to configure device settings, monitor usage/consumable status remotely, upload address books, enable the auditron and much more.

Manage colour printing to minimise costs

Control costs by nominating when colour could be used and by who. This ensures that colour is available to those individuals who truly leverage its power - such as the sales teams and marketing department.

Manage and track device usage

Using Xerox Standard Accounting, device usage data can be obtained and presented as a CSV file for use in accounting and spreadsheet applications.

CentreWare Web

This is a management tool making it easy for administrators to install, configure, manage, monitor and report on all devices on your network, regardless of manufacturer.



- 1 Configure auditron
- 2 Upload email/fax address books as csv files
- 3 Monitor paper tray/consumables status
- 4 Monitor job queues
- 5 Submit driverless print jobs

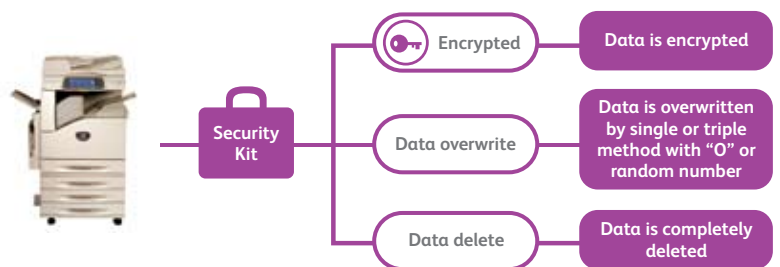
Device security¹

Secure print

Print jobs can be stored on the device and printed from the user interface after the correct password is supplied, eliminating paper wastage and securing confidential information.

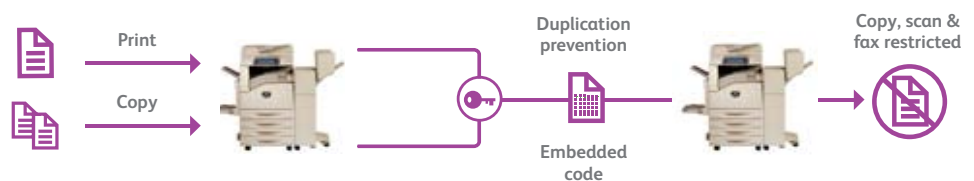
Data security kit (Optional)

The data security kit available with DocuCentre devices provides administrators with three security options:



Secure watermark (Optional)

The unauthorised reproduction of sensitive material can be prevented with the optional secure watermark kit. This is an easy way to embed duplication restriction codes in documents when printing or copying. Documents featuring this secure watermark can not be copied, scanned or faxed using similarly equipped devices.



User prints or copies document containing embedded duplication restriction code. Copying, scanning, or faxing the document is impossible.

¹Optional accessories are required

Enhanced environmental performance

The DocuCentre-III C3300/C2200/C2201 won the prestigious Minister of Economy, Trade and Industry prize in the Eco-Products Category at the 4th Eco-Products Awards in Japan for use of industry-first environmental technologies: new LED print head technology; lead-free shafts; and biomass plastic.



Energy efficiency

Energy consumption on this range of DocuCentre devices has been reduced to 2.2W in sleep mode, significantly lower than conventional colour devices available in its range. In fact, this range is not only energy star compliant but has power consumption similar to that of monochrome devices.

Low noise emissions

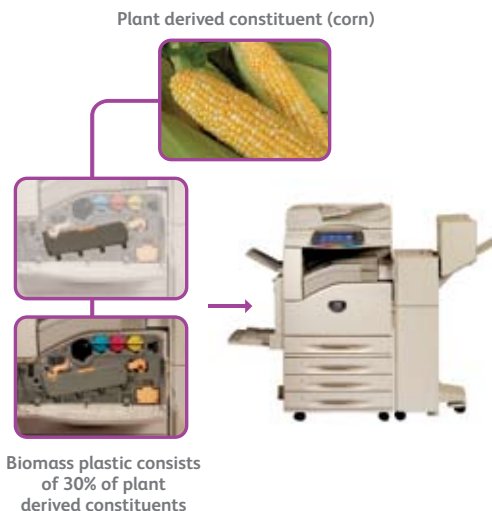
Noise levels have been lowered to 20dB in standby mode and up to 50dB during operation, equivalent to that of low-noise monochrome machines. This feature promotes a comfortable working environment.

Lead-free shafts

Fuji Xerox has gone beyond compliance in the removal of hazardous substances by incorporating lead-free shafts in this range of products. It is the first time that a manufacturer in this industry has put lead-free shafts to full-scale use in multifunction devices.

Employment of biomass plastic

Biomass plastic, comprising more than 30% of plant-derived constituent (corn), is used in specific device parts. The manufacturing process of biomass plastic is less energy intensive than traditional methods. The carbon footprint of producing the biomass plastic is 16% lower than conventional plastic (ABS resin).



Fuji Xerox and environmental sustainability

Fuji Xerox technology and services are designed and managed to improve sustainability performance for its customers. Our equipment features environmentally responsible design and energy efficient enhancements.

Our document software and digital technologies help reduce paper wastage and our services enable clients to improve the efficiency of document intensive business processes and optimise their equipment infrastructure to save costs and cut carbon emissions.

Design for the environment

Every piece of Fuji Xerox equipment is designed with the environment in mind and our policies include:

- Eliminating the need to use hazardous material such as lead-based solder;
- Enabling low energy consumption during use of the machine;
- Utilising innovative and energy efficient toner;
- Minimising the use of new resources; and
- Facilitating the remanufacture or recycling of used machines and parts at a later stage.

A leader in product stewardship

Fuji Xerox was first in our industry to market with products made from reused components and takes responsibility for all end-of-life products. We remanufacture or recycle them to achieve over 99% resource recovery.

Specifications of DocuCentre-III C3300/C2200/C2201 Series

Copy Function

	DocuCentre-III C3300	DocuCentre-III C2200	DocuCentre-III C2201
Type	Console Type		
Memory	768MB (Max. 1.5GB)		
HDD	40GB ¹		
Scanning Resolution	600 × 600dpi		
Warm-up Time	35 sec. (at room temperature 20°C)		
Original Paper Size	Max. A3 for both sheet original and book original		
Output Paper Size	Max. A3, [For Bypass Tray, Max:12.6x17.7" (320x449.6mm), 12x19" (304.8x482.6mm)] Min. A5, [For Bypass Tray, Postcard (100x148mm), Envelope (120x235mm)]		
Output Paper Weight	Tray 60 - 256gsm, Bypass Tray 55 - 256gsm		
First Copy Output Time	BW: 5.0sec / Colour: 6.4sec (C3300), BW: 6.7sec / Colour: 8.7sec (C2200 / C2201)		
Continuous Copy Speed	A4: 35-sheet <BW>	25-sheet <BW>	25-sheet <BW>
	A4: 35-sheet <Colour>	25-sheet <Colour>	20-sheet <Colour>
	A3: 20 ppm, 20 ppm	14 ppm, 14 ppm	14 ppm, 11 ppm
Paper Tray Capacity	Standard: 500 sheets x 4 Tray + Bypass 90 sheets Max: 2,090 sheets		
Output Tray Capacity	400 sheets (A4LEF), 200 sheets (A3)		
Power Supply	AC220-240±10% / 110V±10%, 10/15A for both 50/60Hz±3%		
Power Consumption	2.2KVA (AC220±10%) / 2.4KVA (AC220±10%) / 1.65KVA (110V±10%) In Sleep Mode: 2.2 W, In Low Power Mode: 81W		
Dimensions	W 640 x D 679 x H 1,126mm (With Duplex Automatic Document Feeder)		
Machine weight	132kg		
	¹ Usable Space: 35GB		

Print Function

	DocuCentre-III C3300 / C2200 / C2201
Type	Built-in Type
Print Resolution	1,200 x 2,400dpi, 1,200 x 1,200dpi
PDL	PCL6, PCL5 (standard), Adobe® PostScript® 3™ (optional)
Operating System	Standard (PCL6/PCL5): Windows® 2000, Windows® XP, Windows Server® 2003, Windows Server® 2008, Windows Vista® Windows® XP×64 Windows Server® 2003×64, Windows Server® 2008×64, Windows Vista® × 64 Optional (Adobe® PostScript® 3™): Windows® 2000, Windows® XP, Windows Server® 2003, Windows Server® 2008, Windows Vista®, Windows® XP×64, Windows Server® 2003×64, Windows Server® 2008×64, Windows Vista® ×64, Mac OS 8.6/9.2.2, Mac OS x 10.3.9 10.4.10 except 10.4.7, Mac OS X 10.5
Connectivity	Standard: Ethernet 100BASE-TX/10BASE-T USB2.0 Optional: Bidirectional Parallel IEEE1284-B

Scan Function

	DocuCentre-III C3300 / C2200 / C2201
Type	Colour Scanner
Scanning Speed	BW: 50ipm, Colour: 45ipm
Scanning Resolution	600 x 600dpi, 400 x 400dpi, 300 x 300dpi, 200 x 200dpi
Connectivity	Ethernet 100BASE-TX/10BASE-T
Scan Destinations	Scan to Email, MailBox, PC/Server (using FTP/SMB protocol)

Fax Function (Optional)

	DocuCentre-III C3300 / C2200 / C2201
Send Document Size	Max: A3, 11 x 17"
Recording Paper Size	Max: A3, 11 x 17", Min: A5
Transmission Time	Less than 3 seconds
No. of Fax Lines	PBX, PSTN, Max. 3 ports

Duplex Automatic Document Feeder

	DocuCentre-III C3300 / C2200 / C2201
Capacity	75 sheets
Original Paper Size	Max: A3, 11 x 17", Min: A5
Output Paper Weight	38 - 128gsm In Duplex: 50 - 128gsm

Fuji Xerox Co., Ltd. Recognises the importance of environmental conservation and actively works toward the promotion of recycling. Recycled parts that meet our quality standards are used in ApeosPort-III C3300 / C2200 / C2201. We have determined that this product meets the standards for products of the International Energy Star Program for targeted as a company participating in this Program. ApeosPort-III C3300 / C2200 / C2201 is an Eco Mark product. (Product Type: No. 117 [copying machine], Certification No.: 04117007)

Descriptions in this material, product specifications and/or appearances are subject to change without prior notice due to improvements. Please note that the product colour appears differently from the actual colour as a result of properties of papers or printing ink. Windows and Windows NT are registered trademarks of Microsoft Corporation. NetWare is a registered trademark of Novell, Inc. in the United States. Macintosh, Mac OS and Ether Talk are trademarks of Apple Computer, Inc. PostScript is a registered trademark of Adobe Systems Incorporated in each country. HP-GL is a registered trademark of Hewlett-Packard Company. Other company names or product names are registered trademarks or trademarks of each company.

Spares for the standard configuration of installed machines is supported for up to 7 years from the date of the end of machine production.

Side Tray (Optional)

	DocuCentre-III C3300 / C2200 / C2201
Paper Size	Max: A3, 11 x 17", Min: A5
Capacity	100 Sheets

Finisher-A1 (Optional)

	DocuCentre-III C3300 / C2200 / C2201
Paper Size / Paper Weight	Max: A3, 11 x 17", Min: Postcards (100x148mm), 55 - 220gsm
Stacker Capacity	A4 Up to 500 sheets, A3 or larger: 200 Sheets, Mixed Size Stacking: 250 Sheets [With Staples] Up to 30 Sets
Staple	
Capacity	A4: 50 Sheets (Max 90gsm), B4 or larger: 30 Sheets (Max 90gsm)
Paper Size	Max: A3, 11 x 17", Min: B5 LEF
Position	Single (Front/Rear Angled Staple)

Finisher-B1 (Optional)

	DocuCentre-III C3300 / C2200 / C2201
Paper Size / Paper Weight	Max: A3, 11 x 17", Min: B5, 55 - 220gsm
Stacker Capacity	A4 Up to 2,000 Sheets, [With Staples] Up to 100 Sets or 1,000 Sheets Booklet/Fold: Up to 50 Sets or 600 Sheets
Staple	
Capacity	50 Sheets (Max 90gsm)
Paper Size	Max: A3, 11 x 17", Min: B5
Position	Single (Front/Angled, Back/Straight), Dual (Parallel)
Punch ²	
Paper Size	A3, 11x 17", B4, A4, A4LEF, Letter 8.5 x 11", Letter 8.5 x 11" LEF, B5LEF
Number of Holes	2/4 holes or US 2/3 holes
Paper Weight	55 - 200 gsm
Booklet Finishing ³	
Capacity	Booklet: 15 Sheets, Fold: 5 Sheets
Paper Size	Max: A3, 11 x 17", Min: A4, Letter 8.5 x 11"
Paper Weight	Saddle-Stapling: 64 - 80gsm, Half-Folding: 64 - 105gsm
	² Optional Finisher-B1 Punch unit is required
	³ Optional Finisher-B1 Booklet unit is required

Booklet Finisher-C1 (Optional)⁴

	DocuCentre-III C3300 / C2200 / C2201
Paper Size / Paper Weight	Max: SRA3, 12 x 19", Min: B5, 55 - 220gsm
Stacker Capacity	A4 Up to 1,500 Sheets, [With Staple] Up to 200 Sets or 1,500 Sheets Booklet/Fold: Up to 20 sets
Staple	
Capacity	50 Sheets Max 90gsm
Paper Size	Max: A3, 11 x 17", Min: B5
Position	Single (Front/Back/Angled), Dual (Parallel)
Punch	
Paper Size	A3, 11 x 17", B4, A4, A4LEF, Letter (8.5 x 11"), Letter (8.5 x 11") LEF, B5LEF
Number of Holes	2/4 holes (Option US 2/3 holes)
Paper Weight	55 - 220gsm
Booklet Finishing	
Capacity	Saddle-Stapling: 15 Sheets, Half-Folding 5 Sheets
Paper Size	Max: SRA3, 12 x 18", Min: A4, Letter (8.5 x 11")
Paper Weight	Saddle-Stapling: 64 - 90gsm, Half-Folding: 64 - 105gsm
	⁴ Non-Booklet Finisher-C1 is available with stacker capacity A4 up to 3,000 sheets

Some Copy and Print features will require optional accessories



The 4th Eco-Products Awards
Eco-Products Category Minister's Prize,
the Ministry of Economy, Trade and Industry

Reproduction Prohibitions Please note that reproduction of the following is prohibited by law:
Domestic and overseas bank notes and coins, government-issued securities, national bonds and local bond certificates.
Unused postage stamps and post cards. Certificate stamps stipulated by law. The reproduction of works for copyright purposes (literary works, musical works, paintings, engravings, maps, cinematographic works, photographic works, etc.) is prohibited except when they are reproduced personally, at home or within limited range according to the above. This product is equipped with an anti-counterfeit feature. This feature is not intended to prevent illegal reproduction. Be extremely careful about the management of equipment used.



For Your Safe Use

Before using the product, read the Instruction Manual carefully for proper use.
Use the product with an appropriate adequate power source and voltage displayed. Be sure to establish a ground.
In the case of a failure or short circuit, an electric shock may result.

For more information or detailed product specifications, call or visit us at

Fuji Xerox New Zealand 17 Hargreaves Street,
College Hill, Auckland 1011
Tel. 0800 4 XEROX (0800 493769)

www.fujixerox.co.nz

XEROX, and the sphere of connectivity design are trademarks or registered trademarks of Xerox Corporation in the U.S. and/or other countries. ApeosPort is a trademark or registered trademark of Fuji Xerox Co., Ltd. Other trademarks are the property of their respective owners.

